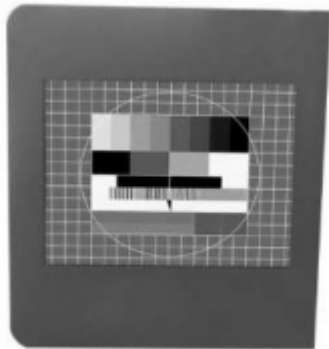


# SEM8-F Cybelec CNC7000/7200

## TFT Replacement 8,4" Cybelec



### Overview

- 8,4 " TFT / LCD monitor for Cybelec
- Replacement for 9/10" CRT-monitor monochrome
- Connector and signal timing compatible to the control
- Settings via on-screen-menu
- Frontpanel black with mounting holes

### Description

The monitors SEM8-F are used as replacement for 9/10" CRT-monitors for the control Cybelec. The default timing is compatible to the control, this means after connecting the monitor the visualisation works correctly. Further adjustments can be made via on-screen-menu. Connector and interface for graphic-signal are compatible to the control, so the replacement is easy. Mounting holes to fix the monitor in the crt-chassis on the mounting points of the tube. Easy and fast replacement without any specialized knowledge.

### Technical data

#### **Ausstattung:**

Industry TFT monitor 8,4" for Cybelec

#### **Control:**

CNC 7000/ 7200

#### **Original monitor:**

9/10" CRT-monitor monochrome

#### **Schnittstellen:**

Edgeconnector

#### **Synchronisation / Timings:**

compatible to the control

#### **Resolution:**

max. 800x600m

#### **visible picture:**

174 x 131 mm

#### **Adjustments:**

via on-screen-menu

#### **Brightness / Contrast:**

min. 400 cd/qm, 500:1

#### **Power supply:**

112 VDC via video signal

#### **MTBF:**

Backlights min. 50000h

#### **Mechanical dimensions:**

Frontpanel: 314 x 270mm

#### **Material:**

Frontpanel: aluminium powder-coated black  
protective glass

#### **Environmental conditions:**

Operating temperature 0-50°C

Storage temperature 0-65°C

Humidity: 10 - 80 % rel. humidity, not condensing

#### **Protection class:**

Front IP 65

#### **Norms**

EN55022 EN55024 EN61010-1

### Part number

10030891 SEM8-F-Cybelec CNC7200